



**GLOUCESTER
COUNTY**

NJ



Resurfacing and Safety Improvements to Kings Highway(CR 605/551) in the Borough of Swedesboro

June 2024





AGENDA

- ▶ Project Overview
- ▶ Project Limits
- ▶ Project Funding
- ▶ Project Plans
- ▶ Project Schedule

PROJECT OVERVIEW

KINGS HIGHWAY

Serves both commercial and residential properties



Pedestrian friendly area

Asphalt surface
Concrete Base

12' travel lanes & variable shoulders

40 feet wide

PROJECT OVERVIEW **Cont'd**

▶ **New Asphalt Surface Course**

- Improve ride quality through a smooth riding surface and the elimination of pavement settlement areas.

▶ **Curb replacement where missing or deteriorated**

- Eliminate problem areas to maintain water flow along the gutter line.

▶ **Replacement of inlet grates, curb pieces, and select inlets and pipe**

- Upgrade existing drainage structures to meet stormwater pollution prevention and bicycle safety requirements.

PROJECT OVERVIEW **Cont'd**

▶ **ADA Improvements**

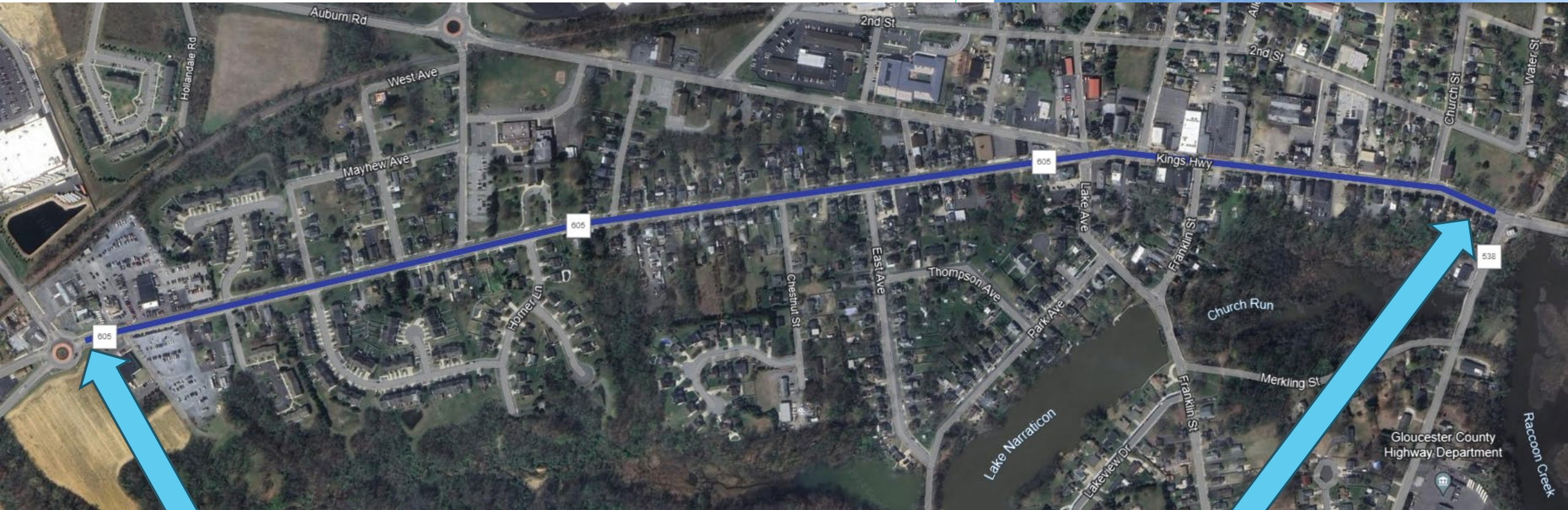
- Upgrade safe crossing locations for compliance with the requirements of The Americans with Disabilities Act.

▶ **Roadway Striping, Pavement Markings, Stop Signs and RPMs**

- Improve pedestrian and vehicle safety with the installation of upgraded signage and striping, including crosswalks and raised pavement markers.

PROJECT LIMITS

**Project length:
1.22 miles**



From roundabout with
Woodstown Rd and
Center Square Rd (CR 620)

To intersection with
Glen Echo Ave (CR 538)

PROJECT FUNDING

- ▶ Federal aid through a grant from



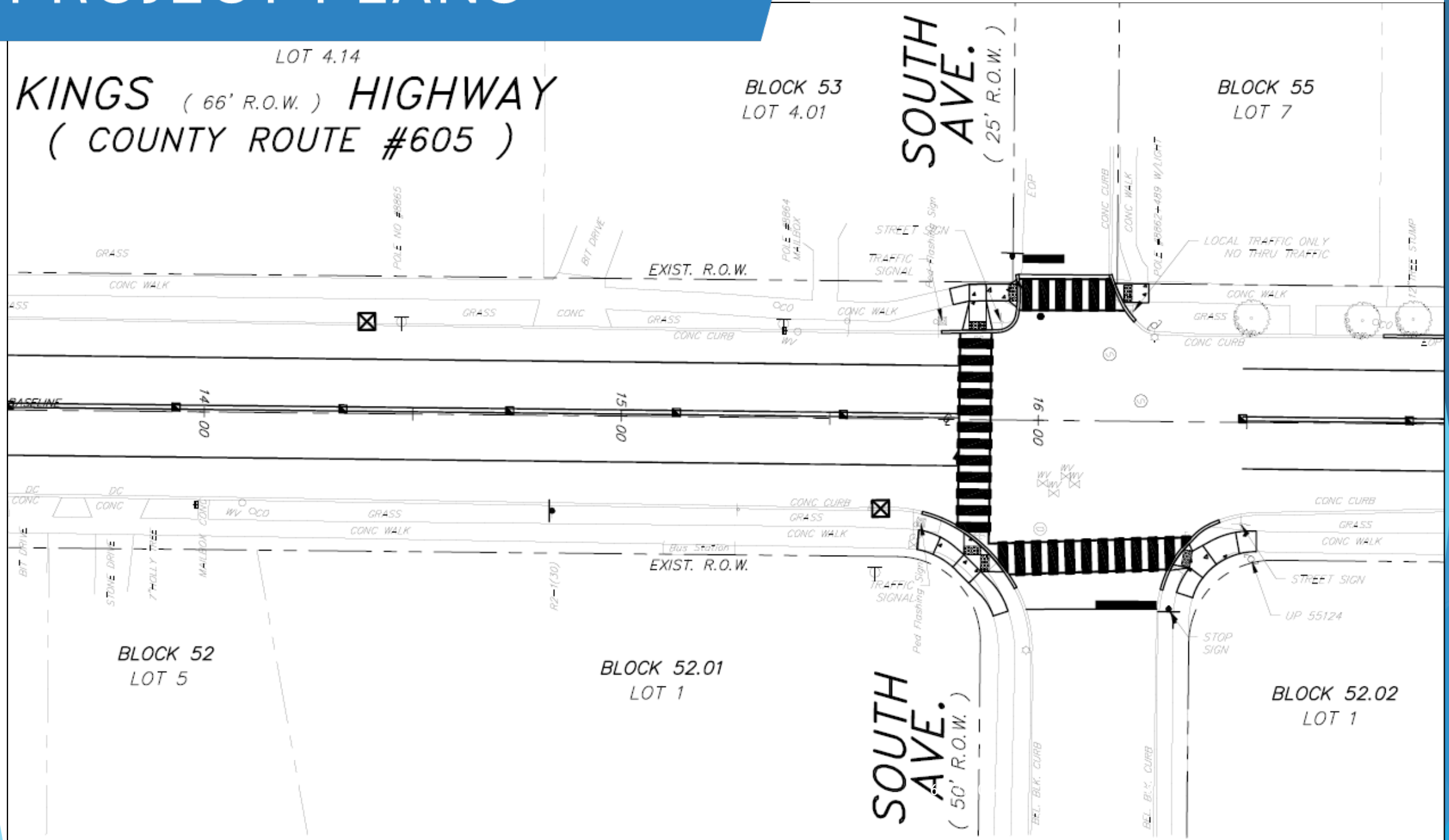
Transportation
Improvement Program
(TIP)

PROJECT FUNDING REQUIREMENTS

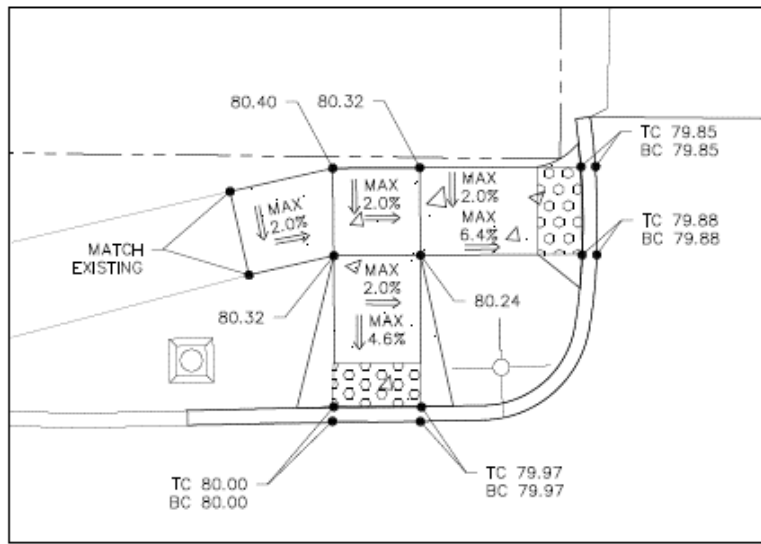
- ▶ Multimodal Safety Improvements
- ▶ ADA Compliance in the Public Right-of-Way
- ▶ Post Performance Measurements

PROJECT PLANS

Sample Striping and ADA Curb Ramp Replacement



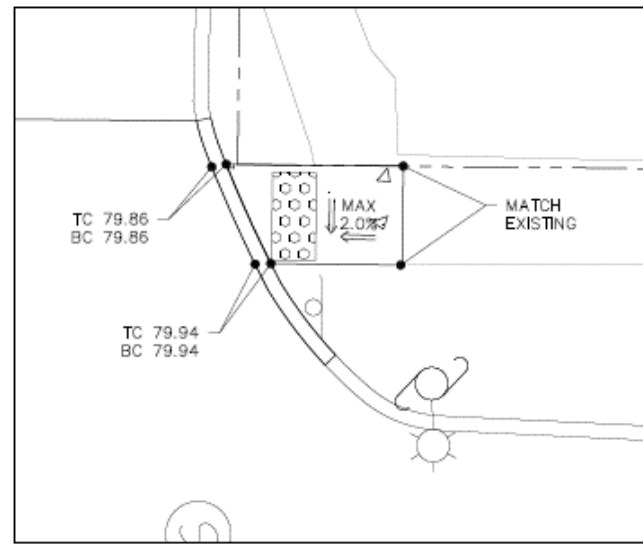
Sample ADA Curb Ramp Design



CURB RAMPS 'I' & 'J'

SCALE: 1" = 5'

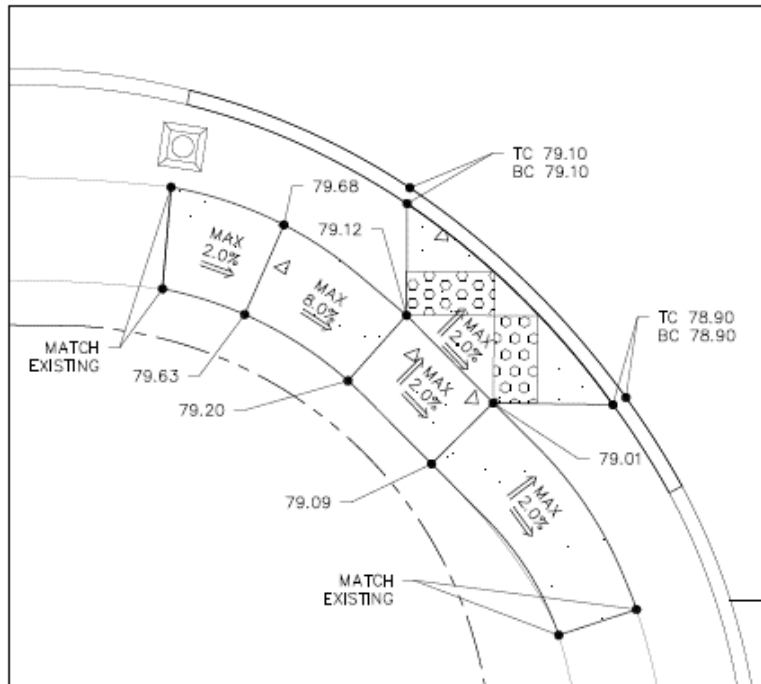
KINGS HIGHWAY



CURB RAMP 'K'

SCALE: 1" = 5'

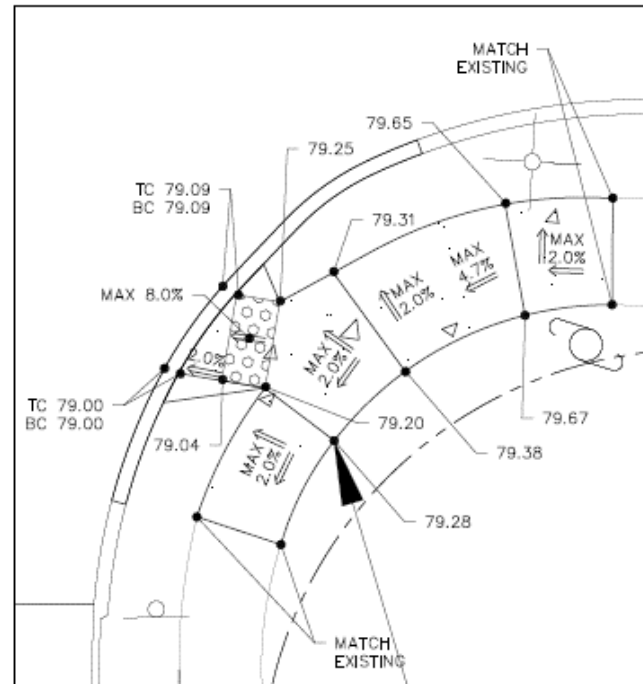
SOUTH AVENUE



CURB RAMP 'L'

SCALE: 1" = 5'

SOUTH AVENUE

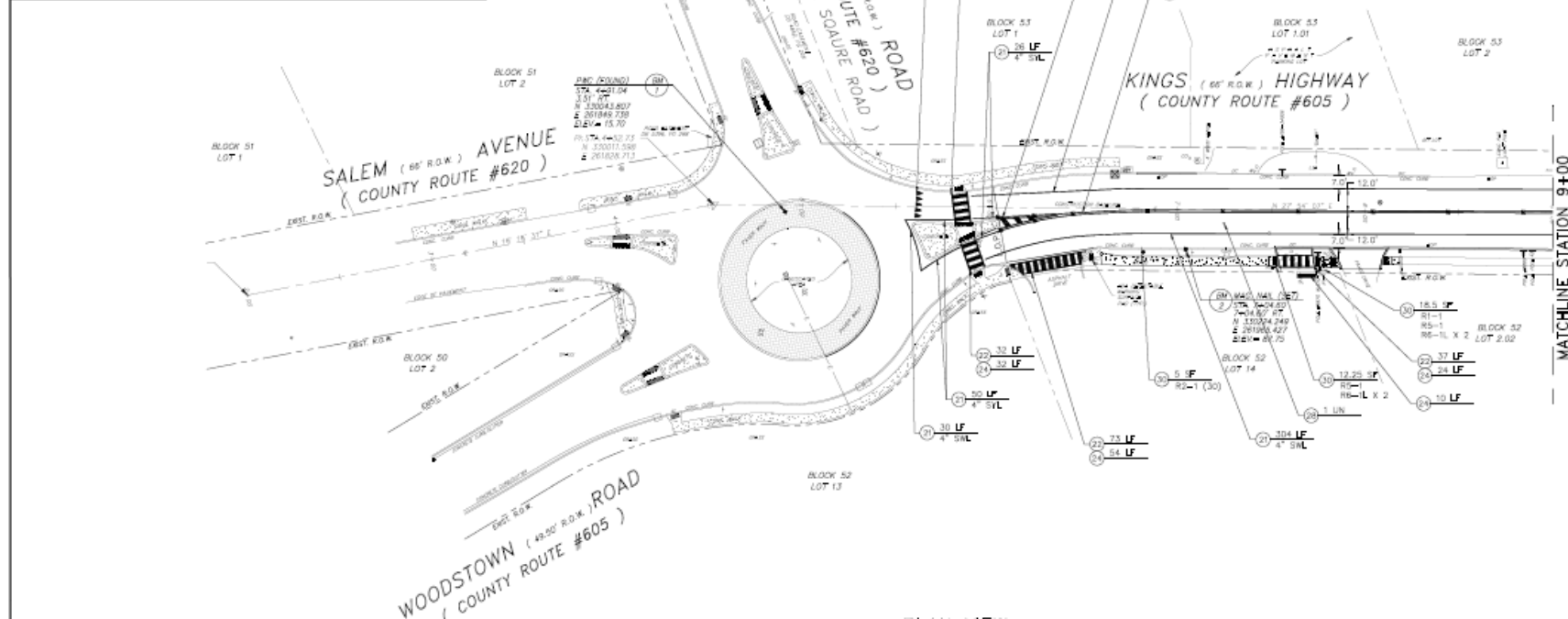


CURB RAMP 'M'

SCALE: 1" = 5'

Striping Plan 1 of 5

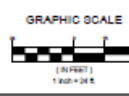
| SIGN TABLE | | | | |
|------------|---------------------------------|------------------|-----|-------|
| SIGN TYPE | DESCRIPTION | SIZE (IN. X IN.) | QTY | S.F. |
| RS-1 | STOP SIGN | 30 X 30 | 15 | 63.75 |
| RS-1 (20) | SPEED LIMIT (20) | 24 X 30 | 4 | 20 |
| RS-1 (30) | SPEED LIMIT (30) | 24 X 30 | 5 | 20 |
| RS-1 (35) | SPEED LIMIT (35) | 24 X 30 | 1 | 5 |
| RS-1 | MOVING VIOLATION | 24 X 24 | 2 | 12 |
| RS-1 | NO RIGHT TURN | 30 X 30 | 1 | 6.25 |
| RS-1 | ONE WAY LEFT | 36 X 12 | 4 | 12 |
| RS-1 | STOP HERE ON RED | 24 X 30 | 1 | 5 |
| RS-1 | NO TURN ON RED | 24 X 30 | 1 | 5 |
| MS-1 | UNPAVED COUNTY ROUTE 620 | 24 X 24 | 1 | 4 |
| MS-1 | UNPAVED COUNTY ROUTE 501 | 24 X 24 | 4 | 16 |
| MS-1 | UNPAVED COUNTY ROUTE 605 | 24 X 24 | 1 | 4 |
| MS-1 | UNPAVED COUNTY ROUTE 604 | 24 X 24 | 3 | 12 |
| MS-1 | SECTION | 21 X 15 | 1 | 2.25 |
| MS-1 | CAPITAL LETTER ALPHABET (NORTH) | 22 X 12 | 1 | 2 |
| MS-1 | CAPITAL LETTER ALPHABET (EAST) | 22 X 12 | 1 | 2 |
| MS-1 | TRUCK ROUTE | 24 X 12 | 1 | 2 |
| MS-1 | DEFORMATION ARROW (HIGH) | 22 X 18 | 1 | 3 |
| MS-1 | DEFORMATION ARROW (MEDIUM) | 22 X 18 | 1 | 3 |
| MS-1 | DEFORMATION ARROW (TOWARD HEAD) | 22 X 18 | 1 | 3 |
| SS-1 (F) | LOW CHILD PLAYING | 36 X 36 | 4 | 36 |
| SS-2 | SCHOOL | 24 X 8 | 1 | 1.33 |
| WS-1 | INTERSECTION WARNING | 30 X 30 | 1 | 6.25 |
| WT-1 | TEXT | 30 X 30 | 1 | 6.25 |



| TO BE CONSTRUCTED | | | | |
|-------------------|--------------------------------|------|---------------|-------------------|
| ITEM NO. | DESCRIPTION | UNIT | PLAN QUANTITY | AS-BUILT QUANTITY |
| 21 | TRAFFIC STRIPES, 4" | LF | 1374 | |
| 22 | TRAFFIC STRIPES, 8" | LF | 179 | |
| 24 | TRAFFIC STRIPES, 24" | LF | 197 | |
| 25 | TRAFFIC MARKING SYMBOLS | SF | 35 | |
| 26 | RPM (R) DIRECTIONAL AMBER LENS | LN | 11 | |
| 28 | RPM (S) DIRECTIONAL BLUE LENS | LN | 9 | |
| 30 | REGULATORY AND WARNING SIGNS | SF | 35.75 | |

LEGEND
 RL - 1" WHITE LINE
 LL - 1" YELLOW LINE
 RL - 2" WHITE LINE
 LL - 2" YELLOW LINE

NOTE:
 1. ALL PAINT MARKINGS ARE TO BE IN ACCORDANCE WITH CURRENT MANUAL ON UNIFORM TRAFFIC CONTROL DEVICES (MUTCD).
 2. ALL PAINT MARKING SYMBOLS ("SCHOOL", "LOW") SHALL BE WHITE.
 3. ALL CROSSINGS SHALL BE 8" WIDE CONTAINING 8" SWL AND 24" SWL WITH A 2" WIDE GAP.



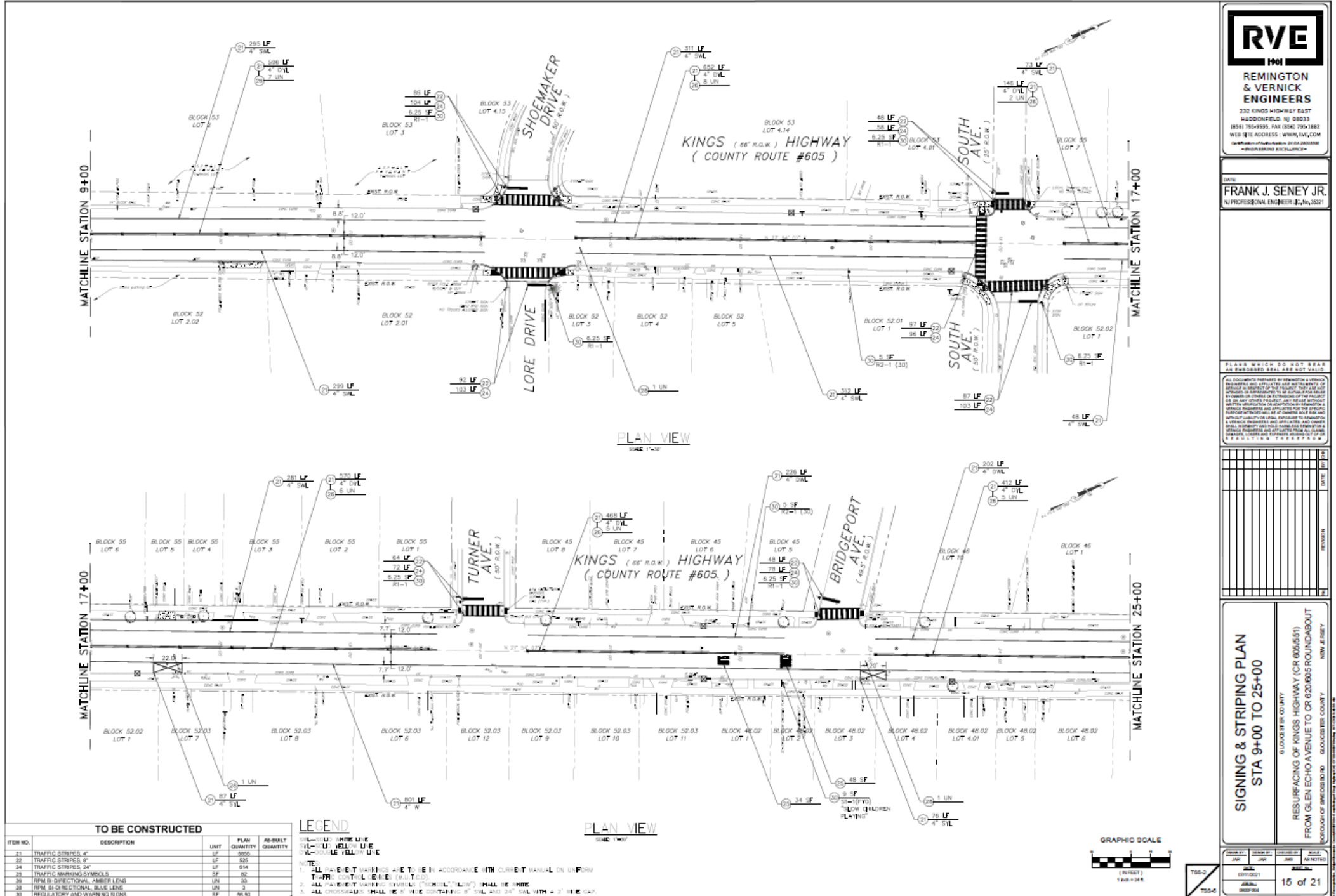
RVE
 REMINGTON & VERNICK ENGINEERS
 232 KINGS HIGHWAY EAST
 HADDONFIELD, NJ 08033
 (856) 754-9395 FAX (856) 754-1882
 WEB SITE ADDRESS: WWW.RVE.COM
 Certificate of Registration - NJ 24 26000008
 -ARCHITECTURE SOCIETY-

DATE: _____
FRANK J. SENEY JR.
 NJ PROFESSIONAL ENGINEER, No. 3521

PLANS WHICH DO NOT BEAR
 THE PROFESSIONAL ENGINEER'S SEAL
 OR SIGNATURE ARE NOT VALID.
 ALL DOCUMENTS PREPARED BY OR FOR AN ENGINEER OR ARCHITECT ARE THE PROPERTY OF RVE AND ARE NOT TO BE REPRODUCED OR COPIED IN ANY MANNER WITHOUT THE WRITTEN PERMISSION OF RVE. RVE AND ITS EMPLOYEES SHALL NOT BE LIABLE FOR ANY DAMAGE OR INJURY TO PERSONS OR PROPERTY ARISING OUT OF THE USE OF ANY INFORMATION CONTAINED HEREIN, WHETHER OR NOT SUCH DAMAGE OR INJURY IS CAUSED BY NEGLIGENCE OR OTHERWISE. THE USER OF ANY INFORMATION CONTAINED HEREIN SHALL BE RESPONSIBLE FOR OBTAINING NECESSARY PERMITS AND APPROVALS FROM ALL APPLICABLE AGENCIES AND AGENCIES SHALL BE RESPONSIBLE FOR OBTAINING NECESSARY PERMITS AND APPROVALS FROM ALL APPLICABLE AGENCIES. THE USER OF ANY INFORMATION CONTAINED HEREIN SHALL BE RESPONSIBLE FOR OBTAINING NECESSARY PERMITS AND APPROVALS FROM ALL APPLICABLE AGENCIES. THE USER OF ANY INFORMATION CONTAINED HEREIN SHALL BE RESPONSIBLE FOR OBTAINING NECESSARY PERMITS AND APPROVALS FROM ALL APPLICABLE AGENCIES.

SIGNING & STRIPING PLAN
 STA 6+03.72 TO 9+00
 GLoucester County
 RESURFACING OF KINGS HIGHWAY (CR 605/551)
 FROM GLEN ECHO AVENUE TO CR 620/605 ROUNDABOUT
 TOWNSHIP OF MEDFORD, GLOUCESTER COUNTY
 NEW JERSEY

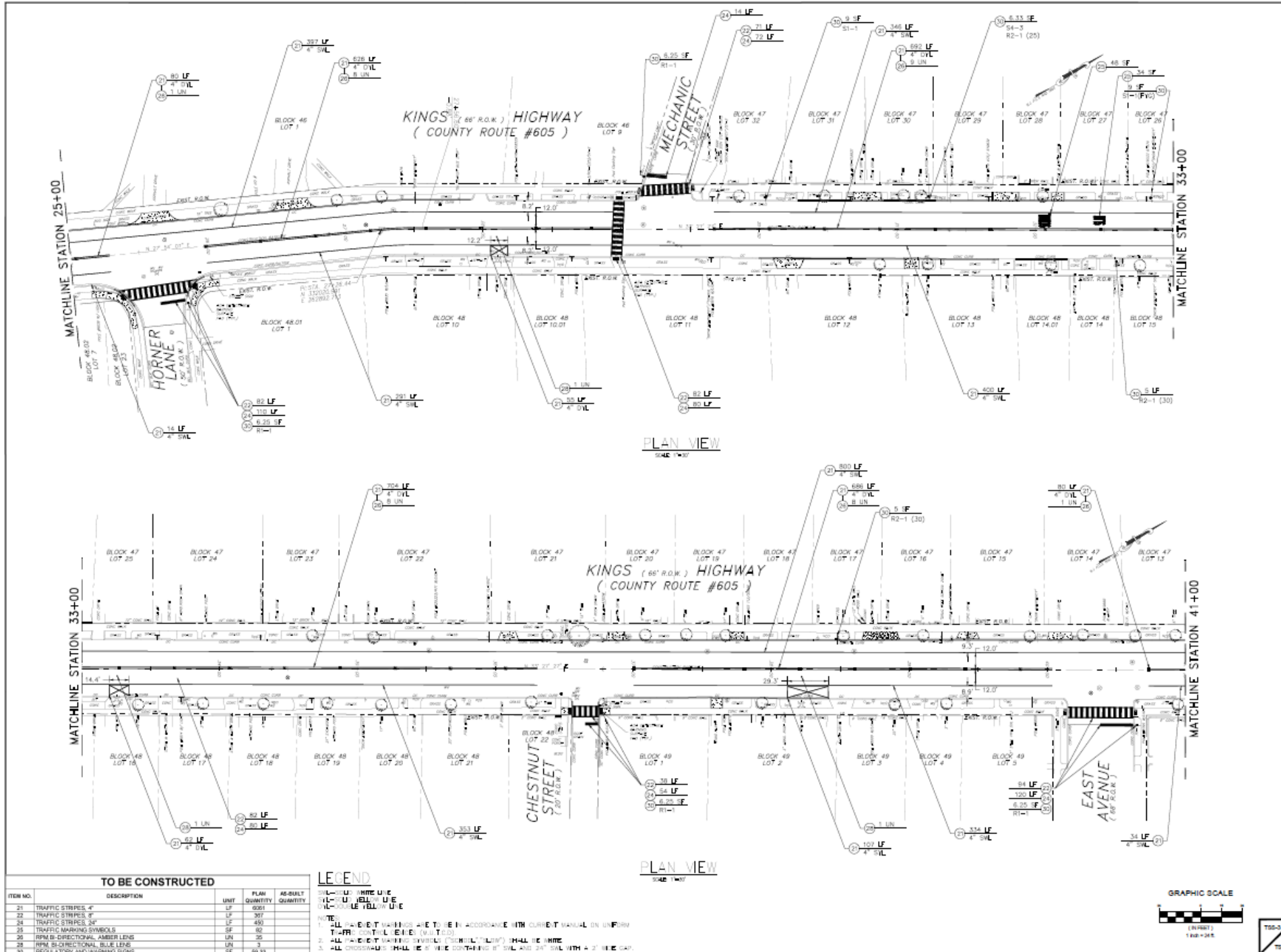
14 of 21



REMINGTON & VERNICK ENGINEERS
232 KINGS HIGHWAY EAST
GLoucesterFIELD, NJ 08033
(856) 754-9395, FAX (856) 754-1882
WEB SITE ADDRESS: WWW.RVE.COM
Certificate of Public Health - 24 DA 28000008
— PROFESSIONAL ENGINEER —

DATE
FRANK J. SENEY JR.
A PROFESSIONAL ENGINEER, No. 35221

PLANS WHICH DO NOT BEAR AN ENGINEER'S SEAL ARE VOID AND ALL DOCUMENTS PREPARED BY REMINGTON & VERNICK ENGINEERS ARE THE PROPERTY OF REMINGTON & VERNICK ENGINEERS. ANY REUSE OR REPRODUCTION OF THESE PLANS OR ANY PART THEREOF WITHOUT THE WRITTEN PERMISSION OF REMINGTON & VERNICK ENGINEERS IS STRICTLY PROHIBITED. ANY VIOLATION OF THIS NOTICE SHALL BE CONSIDERED A VIOLATION OF THE PROFESSIONAL ENGINEERING ACT AND SUBJECT TO PENALTY OR LEGAL PROSECUTION TO REMINGTON & VERNICK ENGINEERS AND APPLICABLE STATE AND FEDERAL LAWS. REMINGTON & VERNICK ENGINEERS SHALL NOT BE RESPONSIBLE FOR ANY DAMAGE, LOSS, INJURY AND/OR DEATH RESULTING FROM THE USE OF THESE PLANS.



| TO BE CONSTRUCTED | | | | |
|-------------------|------------------------------|------|---------------|-------------------|
| ITEM NO. | DESCRIPTION | UNIT | PLAN QUANTITY | AS-BUILT QUANTITY |
| 21 | TRAFFIC STRIPES, 4" | LF | 6361 | |
| 22 | TRAFFIC STRIPES, 5" | LF | 397 | |
| 23 | TRAFFIC STRIPES, 6" | LF | 450 | |
| 24 | TRAFFIC STRIPES, 8" | LF | 450 | |
| 25 | TRAFFIC MARKING SYMBOLS | SF | 92 | |
| 26 | RPM-B DIRECTIONAL AMBER LENS | LN | 25 | |
| 28 | RPM-B DIRECTIONAL BLUE LENS | LN | 3 | |
| 30 | REGULATORY AND WARNING SIGNS | SF | 59.33 | |

LEGEND

- U — WHITE LINE
- Y — YELLOW LINE
- R — YELLOW-TAN LINE

NOTE:

1. ALL PAVEMENT MARKINGS ARE TO BE IN ACCORDANCE WITH CURRENT MANUAL ON UNIFORM CONTROLLED EXPANSION (M.U.T.E.)
2. ALL PAVEMENT MARKING SYMBOLS ("SCHOOL ZONE") SHALL BE WHITE
3. ALL CROSSINGS SHALL BE 6" WIDE CONTAINING 8" SWL AND 24" SWL WITH 4" DIBLE CAP.

REMINGTON & VERNICK ENGINEERS
 232 KINGS HIGHWAY EAST
 GLOUCESTER, NJ 08035
 (856) 756-9595, FAX (856) 756-1882
 WEB SITE ADDRESS: WWW.RVE.COM
 Certificate of Registration - 24 04 2800088
 - PROFESSIONAL ENGINEERING -

DATE: _____

FRANK J. SENY JR.
 A PROFESSIONAL ENGINEER, No. 35321

PLANS WHICH DO NOT BEAR AN APPROVED SEAL ARE VOID.

ALL DOCUMENTS PREPARED BY REMINGTON & VERNICK ENGINEERS ARE THE PROPERTY OF THE COMPANY. ANY REPRODUCTION OR USE OF ANY PART OF THIS DOCUMENT WITHOUT THE WRITTEN PERMISSION OF REMINGTON & VERNICK ENGINEERS IS PROHIBITED. ANY SUCH REPRODUCTION OR USE WITHOUT WRITTEN PERMISSION OF REMINGTON & VERNICK ENGINEERS IS PROHIBITED AND WILL BE PROSECUTED TO THE FULL EXTENT OF THE LAW. REMINGTON & VERNICK ENGINEERS IS NOT RESPONSIBLE FOR ANY DAMAGE TO PERSONS OR PROPERTY CAUSED BY THE USE OF ANY INFORMATION CONTAINED IN THIS DOCUMENT.

SIGNING & STRIPING PLAN
 STA 25+00 TO 41+00

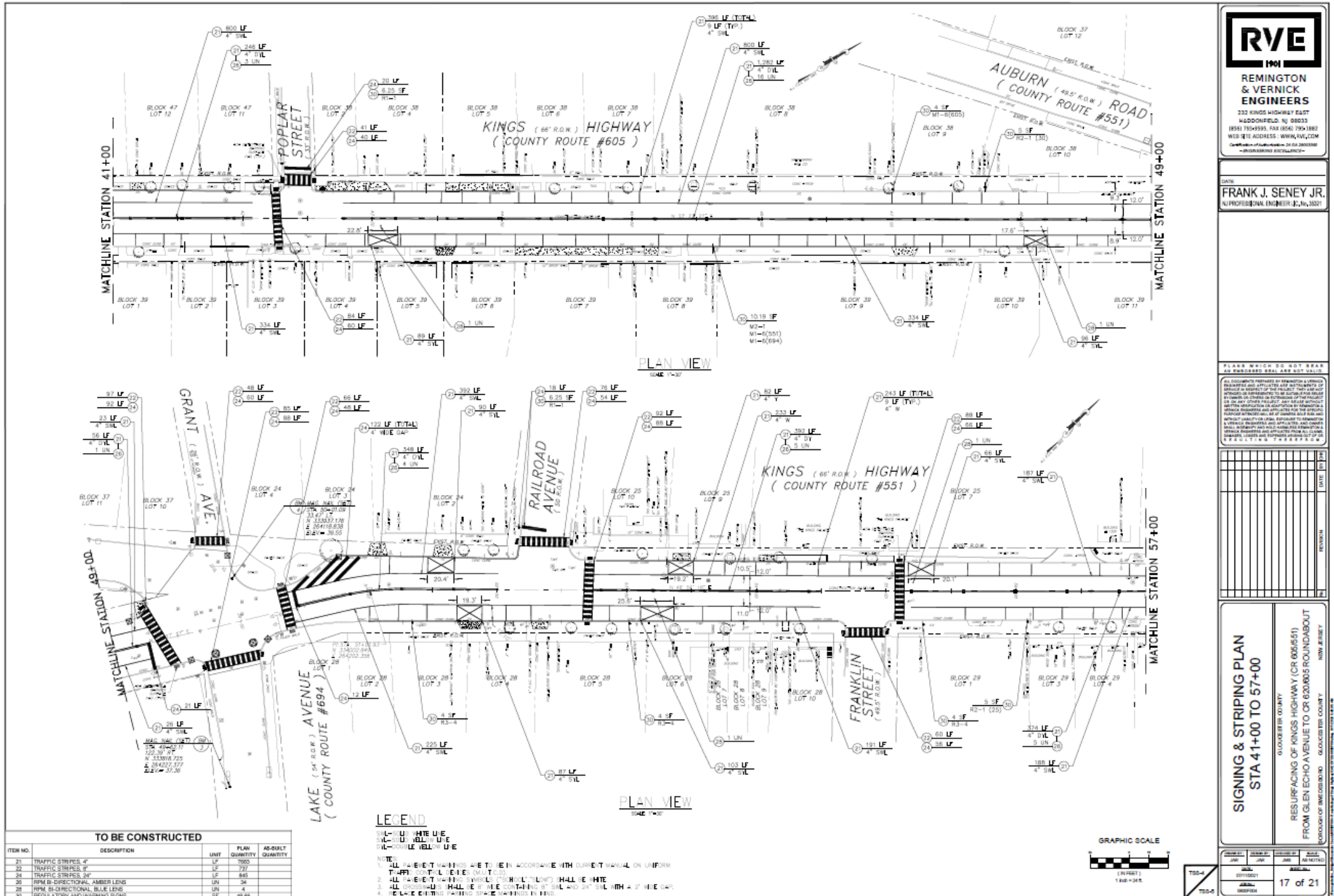
GLOUCESTER COUNTY
 RESURFACING OF KINGS HIGHWAY (CR 605/551)
 FROM GLEN ECHO AVENUE TO CR 620/605 ROUNDABOUT
 TOWNSHIP OF MEDFORD - GLOUCESTER COUNTY NEW JERSEY

GRAPHIC SCALE

1" = 100'

18 of 21

Striping Plan 4 of 5



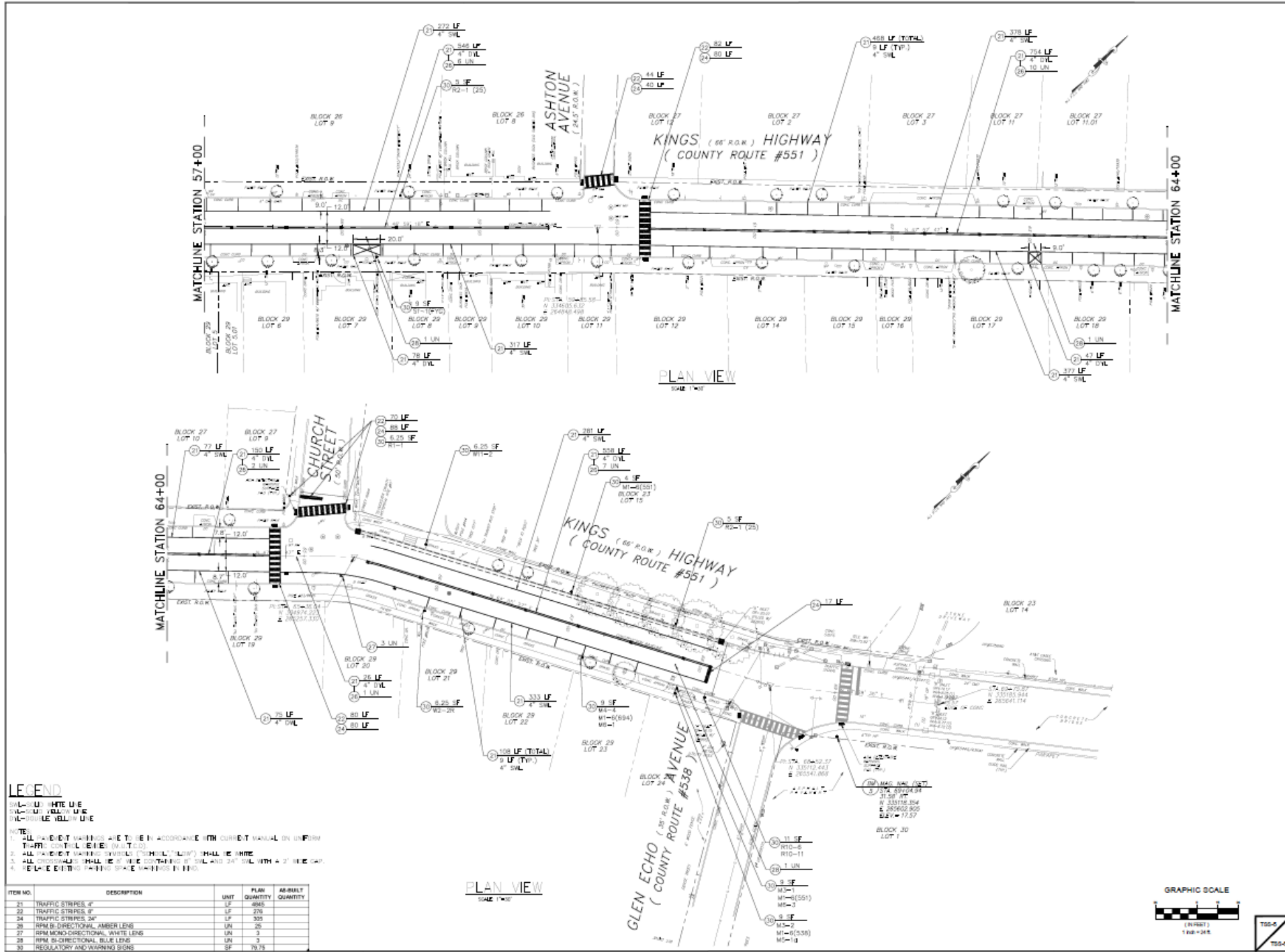
RVE
 1901
REMINGTON & VERNICK ENGINEERS
 232 KINGS HIGHWAY EAST
 WOODBRIDGE, NJ 08033
 (856) 754-9395, FAX (856) 754-1882
 WEB SITE ADDRESS: WWW.RVW.COM
 CERTIFICATE OF LICENSE NO. 24 04 2800008
 -MEMBER OF THE SOCIETY-

DATE
FRANK J. SENEY JR.
 A PROFESSIONAL ENGINEER, No. 35321

PLANS WHICH DO NOT BEAR AN ENGINEER'S SEAL ARE VOID AND INVALID IN RESPECT OF THE PROJECT. THEY ARE NOT SUBJECT TO ANY LIABILITY TO ANY PARTY. THE USER OF SUCH PLANS OR ANY PART THEREOF SHALL BE RESPONSIBLE FOR ANY AND ALL DAMAGES, LOSSES AND COSTS INCURRED BY ANY PARTY AS A RESULT OF SUCH USE. THE USER OF SUCH PLANS OR ANY PART THEREOF SHALL BE RESPONSIBLE FOR ANY AND ALL DAMAGES, LOSSES AND COSTS INCURRED BY ANY PARTY AS A RESULT OF SUCH USE.

SIGNING & STRIPING PLAN
 STA 41+00 TO 57+00

GLoucester County
 RESURFACING OF KINGS HIGHWAY (CR 605/551)
 FROM GLEN ECHO AVENUE TO CR 620/605 ROUNDABOUT
 TOWNSHIP OF MEDFORD, GLOUCESTER COUNTY, NEW JERSEY



LEGEND

1"=4" WHITE U.E.
 1"=4" DOUBLE YELLOW U.E.
 1"=4" DOUBLE YELLOW U.E.

NOTE:

1. ALL TRAFFIC MARKINGS ARE TO BE IN ACCORDANCE WITH CURRENT MANUAL ON UNIFORM TRAFFIC CONTROL DEVICES (MUTCD).
2. ALL TRAFFIC MARKING SYMBOLS ("SIGNAL", "ARROW") SHALL BE WHITE.
3. ALL CROSSINGS SHALL BE AT LEAST 20'-0" FROM THE END OF THE ROAD WITH A 2' BUREAU GAP.
4. REFLECTIVE WHITE PAINT SHALL BE USED.

| ITEM NO. | DESCRIPTION | UNIT | PLAN QUANTITY | AS-BUILT QUANTITY |
|----------|------------------------------------|------|---------------|-------------------|
| 21 | TRAFFIC STRIPES 2" | LF | 4945 | |
| 22 | TRAFFIC STRIPES 8" | LF | 276 | |
| 24 | TRAFFIC STRIPES 24" | LF | 300 | |
| 26 | RPM 8" DIRECTIONAL AMBER LENS | LN | 26 | |
| 27 | RPM 8" BICO DIRECTIONAL WHITE LENS | LN | 3 | |
| 28 | RPM 8" BICO DIRECTIONAL BLUE LENS | LN | 3 | |
| 30 | REGULATORY AND WARNING SIGNS | SF | 79.75 | |

REMINGTON & VERNICK ENGINEERS
 232 KINGS HIGHWAY EAST
 HADDONFIELD, NJ 08033
 (856) 754-9395 FAX (856) 754-1882
 WEB SITE ADDRESS: WWW.RVE.COM
 CERTIFICATE OF AUTHORITY: 24 DA 28000000
 PROFESSIONAL ENGINEERING

DATE: _____
FRANK J. SENEY JR.
 NJ PROFESSIONAL ENGINEER, No. 35321

PLANS WHICH DO NOT BEAR AN ENGINEER'S SEAL ARE NOT VALID.

ALL DOCUMENTS PREPARED BY REMINGTON & VERNICK ENGINEERS, INC. ARE THE PROPERTY OF REMINGTON & VERNICK ENGINEERS, INC. AND ARE NOT TO BE REPRODUCED OR TRANSMITTED IN ANY FORM OR BY ANY MEANS, ELECTRONIC OR MECHANICAL, INCLUDING PHOTOCOPYING, RECORDING, OR BY ANY INFORMATION STORAGE AND RETRIEVAL SYSTEM, WITHOUT THE WRITTEN PERMISSION OF REMINGTON & VERNICK ENGINEERS, INC. ANY UNAUTHORIZED REPRODUCTION OR TRANSMISSION OF THIS DOCUMENT IS STRICTLY PROHIBITED AND WILL BE PROSECUTED TO THE FULL EXTENT OF THE LAW. REMINGTON & VERNICK ENGINEERS, INC. ACCEPTS NO LIABILITY FOR ANY DAMAGE, INCLUDING CONSEQUENTIAL DAMAGES, ARISING OUT OF OR FROM THE USE OF THIS DOCUMENT.

| DATE | BY | REVISION |
|------|----|----------|
| | | |
| | | |
| | | |
| | | |
| | | |

SIGNING & STRIPING PLAN
 STA 57+00 TO 68+14

GLoucester COUNTY
 RESURFACING OF KINGS HIGHWAY (CR 605/551)
 FROM GLEN ECHO AVENUE TO CR 620/605 ROUNDABOUT
 TOWNSHIP OF MEDFORD, GLOUCESTER COUNTY, NEW JERSEY

18 of 21

TSS-4
 TSS-4

Estimated PROJECT SCHEDULE

Submission for
Final Funding
Approval:
July 2024

Advertisement and
award of bid is
dependent upon final
Federal Funding
authorization

Projected Construction Start
following receipt of funding
authorization:
On or about late Fall 2024



QUESTIONS?

Questions can be submitted to:

frank.seney@RVE.com

until July 20, 2024

